



**HTUD**  
Hi Tech Urban Development Inc.

Group









# Facade Systems

## Economic Silicone Facade Systems - FS 50 ECO



- Drain (condensate) channels maximum through air and water discharge performance,
- Silicone front view, and not that tape in constant region,
- EPDM thanks to the longevity of all wick,
- Practical and hassle-free detail solutions.
- Frame width: 50 mm
- Uninterrupted glass façade with glass retaining clips image, glass facade with silicone bonding process integrity.
- Electrostatic paint (RAL) and anodizing supply facilities.
- Manufacturing and installation convenience.
- Glazing application possibility up to 4,6 mm

## Silicone Facade Systems - FS 50



- Bonding! heat insulated and uninsulated Possibility of tape, with glass facade integrity,
- Drain (condensate) channels maximum through air and water discharge performance,
- The maximum building height of 100 m,
- 18-40 mm glass combination,
- EPDM thanks to the longevity of all wick,
- Practical and hassle-free detail solutions,
- Thermal Conductivity (Ufa): 5.0 W / m²K
- Integrity of the glass facade with silicone bonding process,
- Glass holder tray with continuous glass façade of the image.,
- Electrostatic paint (RAL) and anodizing supply facilities,
- Manufacturing and assembly comfort 6-32 mm glass combination



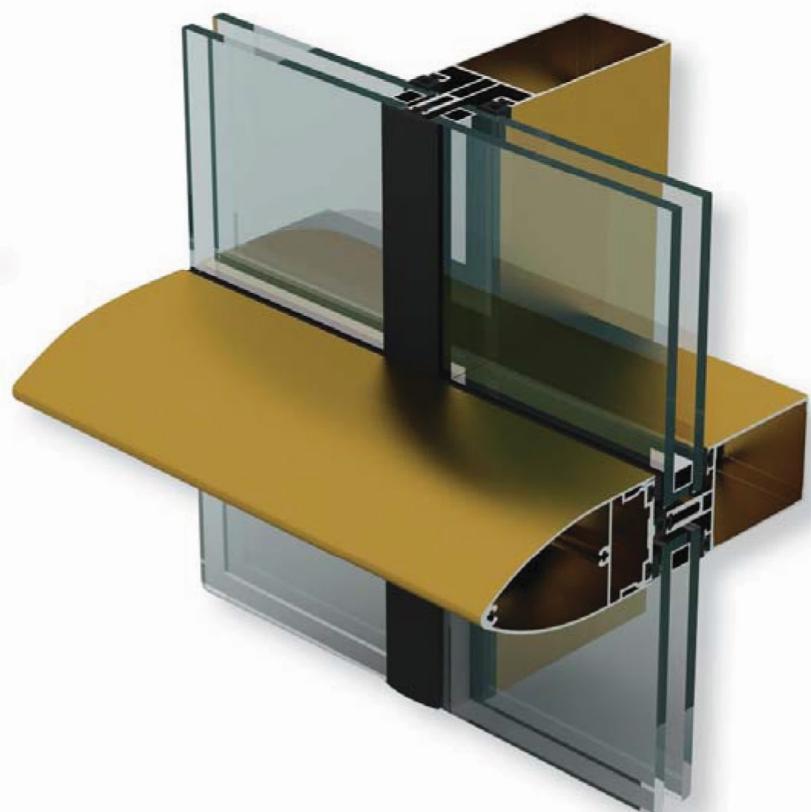
## Front Cover - FS 50

- Decorative cover alternatives, in terms of standard and custom front with the striking aesthetics with appropriate special sections designed.
- Drain (condensate) channels maximum through air and water discharge performance,
- The maximum building height of 100 m.
- EPDM thanks to the longevity of all wick,
- Practical and hassle-free detail solutions.
- 2.0 and 1.6 mm compatibility
- Frame width: 50 mm
- Norton robust bonding with tape.
- Uninterrupted glass façade with glass holder cassette view, glass facade with silicone bonding process integrity.
- Electrostatic paint (RAL) and anodizing supply facilities.
- Manufacturing and installation convenience.
- 6-24 mm glass combination,
- Thermal Conductivity (Ufa):  $6.8 \text{ W} / \text{m}^2\text{K}$



## Semi-Lid Wall - FS 50

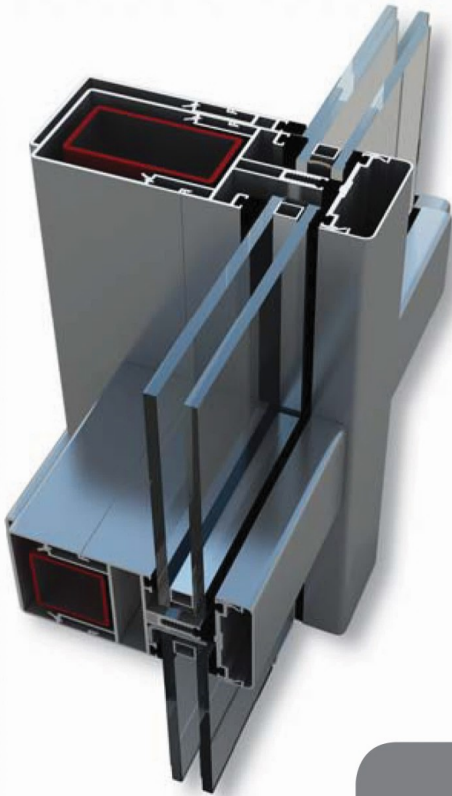
- Optionally, horizontal or vertical structure with the use of EPDM gaskets are provided with opportunities to emphasize the desired line,
- Visual diversity with decorative cover alternatives,
- The maximum building height of 100 m.
- 6-24 mm glass combination,
- EPDM thanks to the longevity of all wick,
- Practical and hassle-free detail solutions,





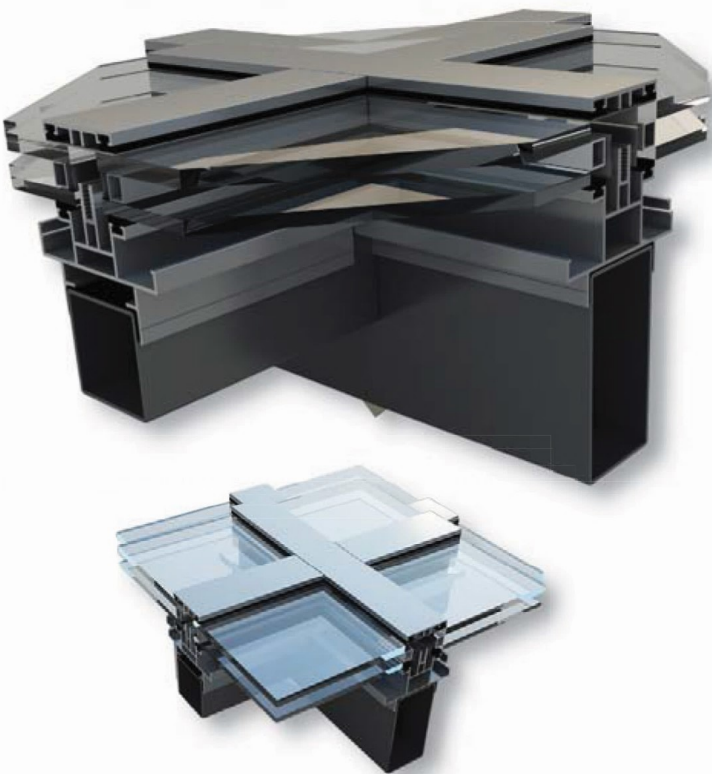
# / Facade Systems

## / Steel Reinforced Facade - FS 65



- It is successful in moving large openings.
- The cap on the vertical façade system works like, steel-framed structures as being in the horizontal profile of the skylight system notching process is applied.
- the cross section of the profiles is 65 mm outer cover allows use 55ve 65 mm.
- Due to the channel condenser in the vertical profile is provided to drain the water.
- Eliminates the cold bridges that may occur with EPDM wedge profile in the outer has been removed.
- Horizontal and vertical clamshell lid is in the vertical silicon horizontal cladding applications to provide the opportunity.

## / Skylight Facade - SK 50

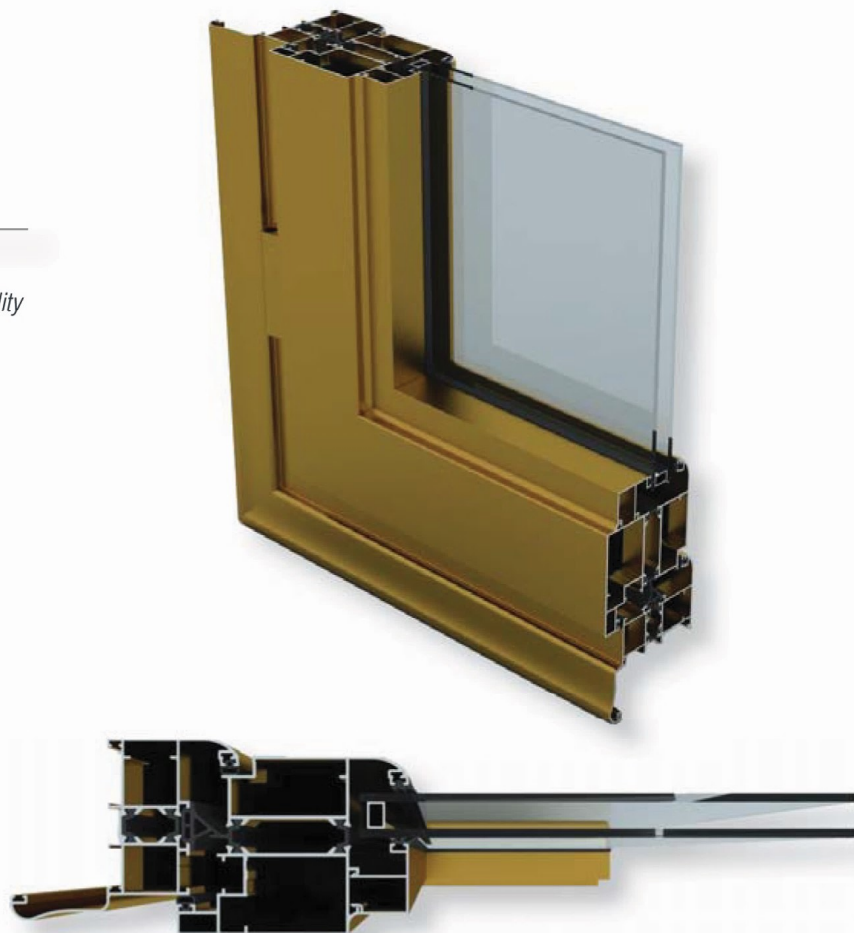


- It is designed to create bright spaces using natural light.
- Condensate channel and channel-administered.
- Horizontal - vertical cover can be applied can be applied in a vertical silicon lid horizontal.
- A special sealing system and are unaffected by moisture evaporation.
- Exposure of the load and the harsh natural conditions remain, without being affected for many years, the facility can be used without changing the colors and shapes.
- When used as a skylight in addition to the ease of implementation as a two or four-part roof in the winter garden or nature, it can be applied safely with the dropper or a combination of different applications.
- Openings at different distances, the possibility of easy application without requiring any device consisting of several machines.
- Designed to move the large opening; application and is a practical manufacturing system.
- There are suitable alternatives to close the inner cover steel substructures with the system.
- Glass and has a polycarbonate sheet facility implementation.
- As well as with a wide range of products it is also economic.



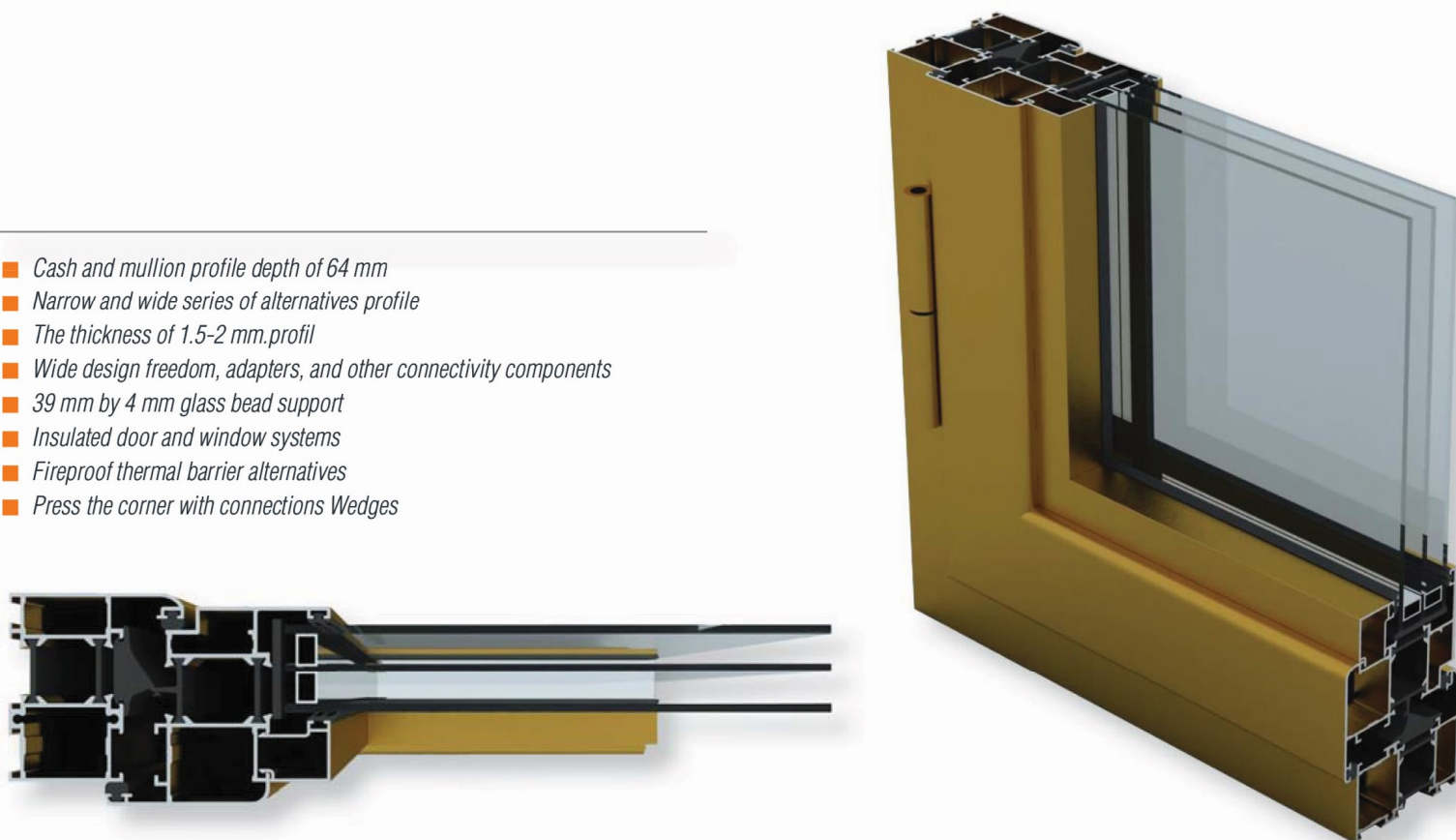
## WD 62 Thermo

- The wide profile options that are responsive architectural styles,
- Double system of PVC and wooden axes, put & take and so on. the possibility of using the mechanisms of evolution
- 20 mm and 24 mm, excellent insulation with polyamide insulating bridge options
- 62 mm 80 mm wingspan on like safe
- Up to 37 mm thick glazing facilities



## WD 64 Thermo

- Cash and mullion profile depth of 64 mm
- Narrow and wide series of alternatives profile
- The thickness of 1.5-2 mm.profil
- Wide design freedom, adapters, and other connectivity components
- 39 mm by 4 mm glass bead support
- Insulated door and window systems
- Fireproof thermal barrier alternatives
- Press the corner with connections Wedges

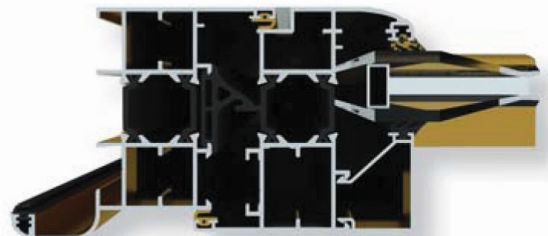




## WD 70 Thermo



- PVC and wood double axis system, remove the drive and so on the possibility of using the mechanisms of evolution
- 15 mm and 24 mm polyamide insulation bridge,
- Increase the heat resistance of an insulating bars,
- 91 mm wingspan up to 77 mm chassis,
- Glass applications at up to 42 mm thick



## FD 60 Folding Door

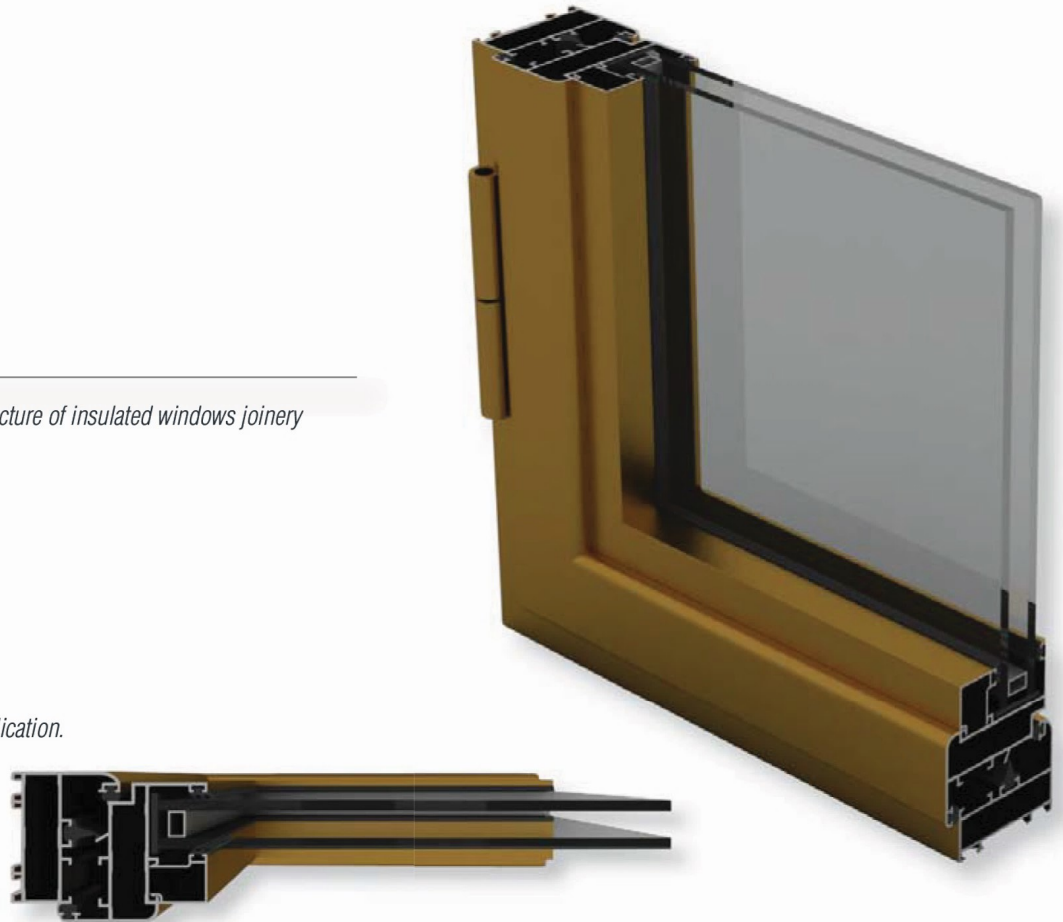


- 60 mm wingspan,
- Safe to use, easy and comfortable movement feature
- It is folding, it is applied in large openings when opened exterior merge seamlessly with the interior of the property
- Ambient EPDM gasket used four continuous insulation is provided.
- 2,60 in height and 80 kg to apply to carry up wing facilities,
- 20-29 mm possibility to use double glazing.



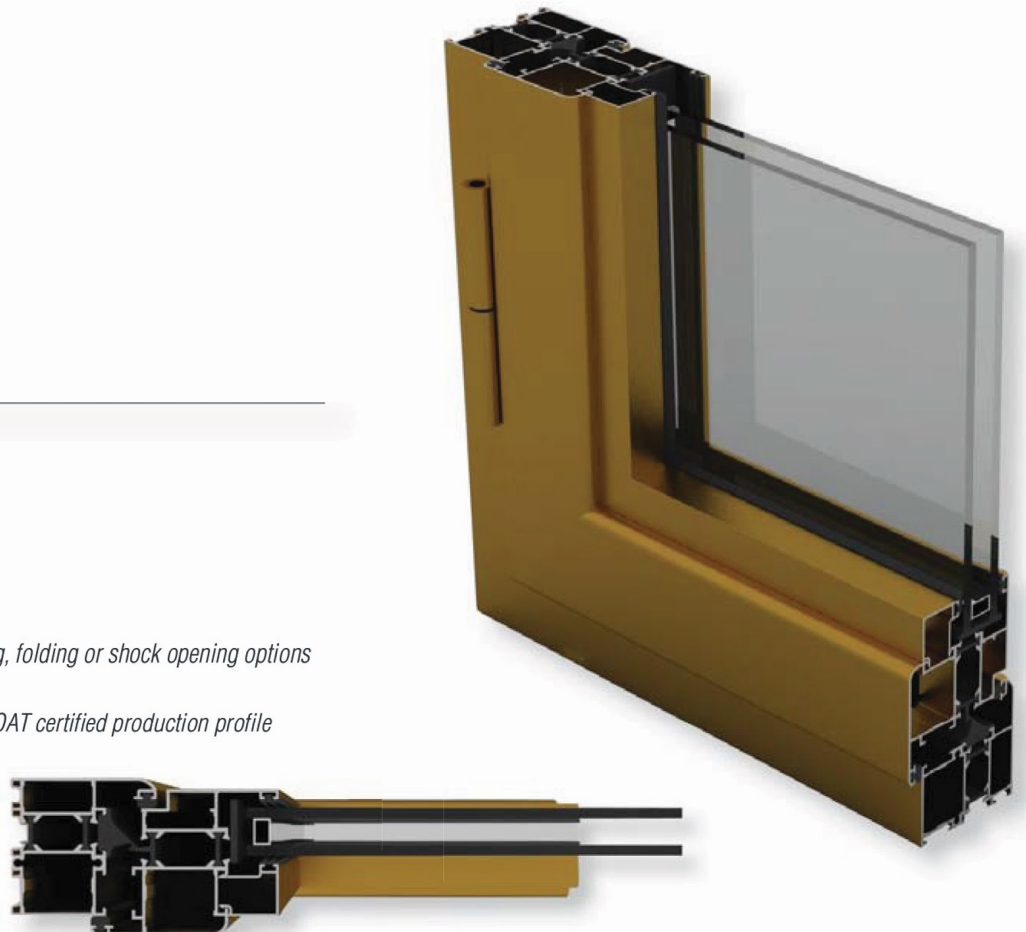
## WD 55

- Windows, doors, pivot and is used in the manufacture of insulated windows joinery aluminum joinery series. Economical.
- Frame and sash depth: 45 mm
- Profile thickness: 1.2 -1.5 mm -2 mm
- Glass gap: 4 mm - 20 mm
- Leggings wick used.
- Manufacturing and practical application.
- Dual Axis Mechanism Uses.
- Enables application as both faces and overlay.
- Original and innovative designs deliver your application.



## WD 55 Thermo

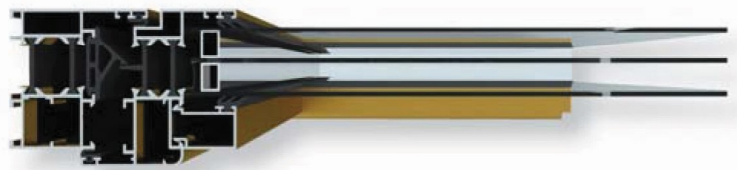
- Body depth 55 mm
- Narrow and broad forehead alternative Profiles
- 30 mm by 4 mm glass bead support
- Insulated door and window systems
- Fireproof thermal barrier alternatives
- Press the corner with connections Wedges
- Normally, dual-axis, tilt, sliding-tilt, outward opening, folding or shock opening options
- 1.5-2 mm wall thickness with system profiles.
- Option in all RAL colors and anodizing and QUALICOAT certified production profile
- EPDM air, water and dust sealing cords
- Rosenheim Thermal Test Report.



## WD 59 Thermo



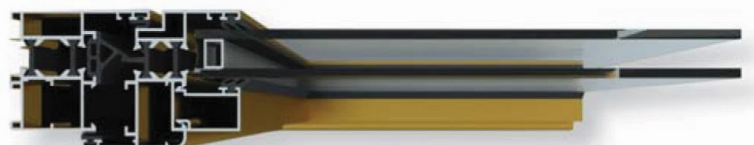
- Ribbed leggings provided with EPDM, weather proofing system
- All windows and complete solution for door types
- Iso ywd driving range with practice facilities
- Over 59 mm frame 66 mm wingspan
- The possibility of up to 35 mm thick glass applications



## WD 50 Thermo



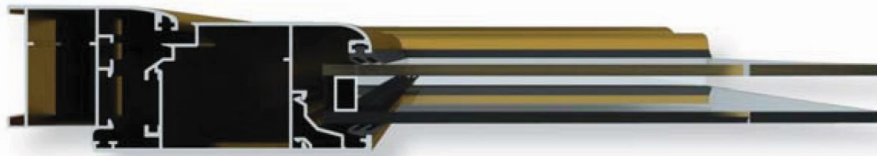
- Ribbed leggings provided with EPDM, air tightness system
- All windows and complete solution for door types
- Iso ywd driving range with practice facilities
- 57 mm wingspan of over 50 mm casing
- The possibility of up to 26 mm thick glass applications





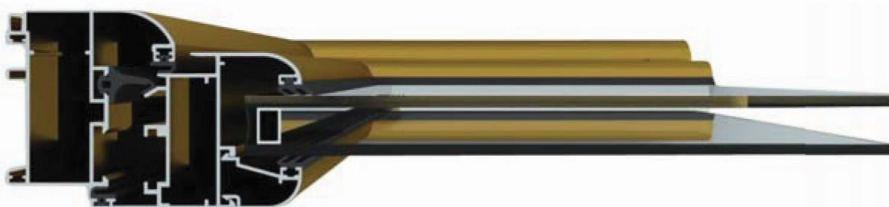
## WD 37

- Windows, doors, pivot and is used in the manufacture of insulated windows joinery aluminum joinery series. Economical.
- Frame and sash depth: 45 mm
- Profile thickness: 1.2 -1.5 mm -2 mm
- Glass gap: 4 mm - 20 mm
- Leggings wick used.
- Manufacturing and practical application.
- Dual Axis Mechanism Uses.
- Enables application as both faces and overlay.
- Original and innovative designs deliver your application.



## WD 45

- All windows and complete solution for door types
- 3 air tightness system with EPDM gaskets at different points
- Ywd driving range with practice facilities
- 45 mm. safe on 52 mm. wings application
- 40 mm. glass bead support up to thickness





- Windows, doors, pivot and is used in the manufacture of insulated windows joinery aluminum joinery series. Economical.
- Frame and sash depth: 45 mm
- Profile thickness: 1.2 -1.5 mm -2 mm
- Glass gap: 4 mm - 20 mm
- Leggings wick used.
- Manufacturing and practical application.
- Dual Axis Mechanism Uses.
- Enables application as both faces and overlay.
- Original and innovative designs deliver your application.



- Windows, doors, pivot and is used in the manufacture of insulated windows joinery aluminum joinery series. Economical.
- Frame and sash depth: 45 mm
- Profile thickness: 1.2 -1.5 mm -2 mm
- Glass gap: 4 mm - 20 mm
- Leggings wick used.
- Manufacturing and practical application.
- Dual Axis Mechanism Uses.
- Enables application as both faces and overlay.
- Original and innovative designs deliver your application.





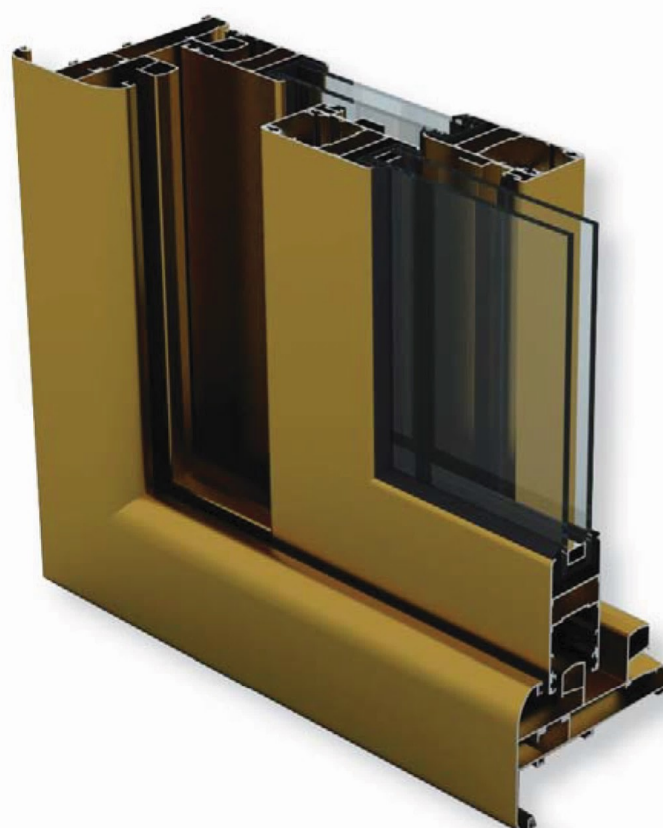
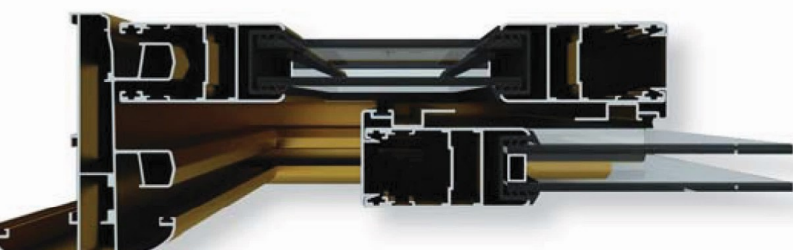
## HS 55

- *Ideal system for large openings*
- *Remove the possibility of a complete solution for all types of window and door drive*
- *Brush round EPDM gaskets used in place of special high air tightness and sound insulation level of the wick*
- *Up to 300 kg sash weight*
- *Glazing with glazing bead*
- *Stainless steel rail implementation that improves performance*
- *High security locks from multiple point applications*
- *Auto Lift & take the opportunity to use mechanisms*
- *12 mm and 20 mm polyamide sealing bridge*
- *55 mm wingspan*
- *Glass applications at up to 24-30 mm thick*



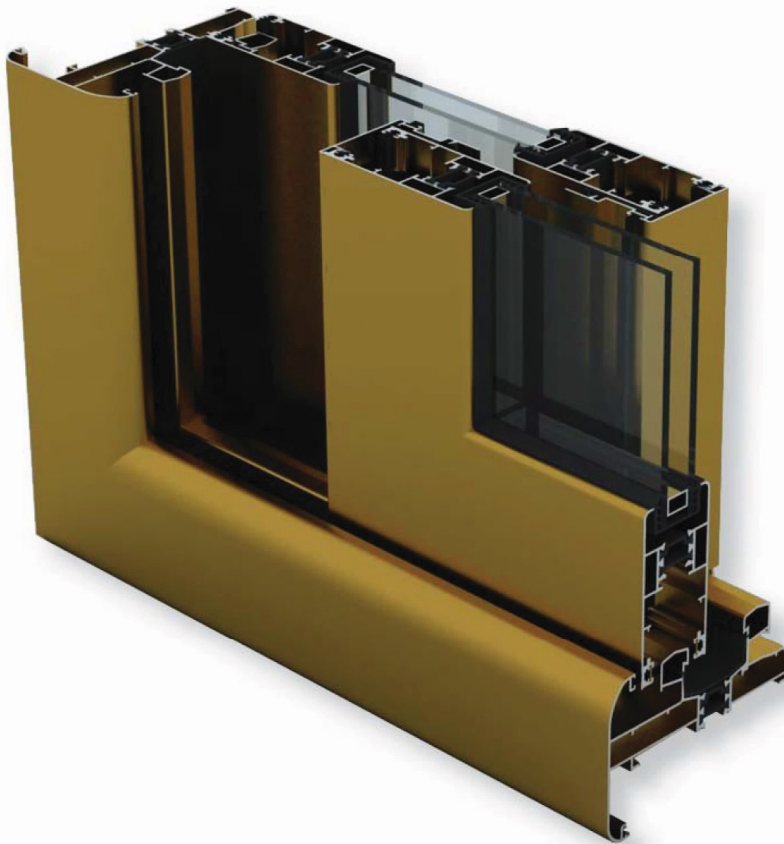
## CS 34

- *75 kg sash weight up*
- *Satisfactory levels of air tightness and sound insulation*
- *Possibility of complete solutions for all types of sliding windows and doors*
- *Stainless steel rail that increases application performance*
- *34 mm wingspan*
- *Glass applications at up to 20 mm thick*

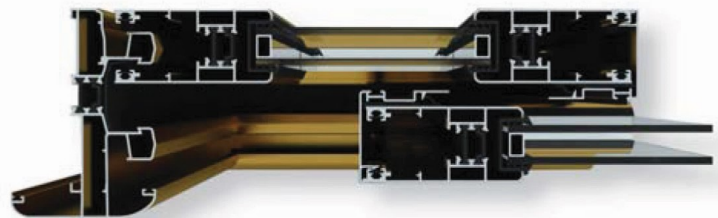


# Sliding Systems

## CS 35 Thermo



- Suitable systems for medium and large openings
- Complete solutions for all types of sliding windows and doors
- 150 kg sash weight up
- 39 mm wingspan
- Glass applications at up to 24 mm thickness



## S 28 - S 32



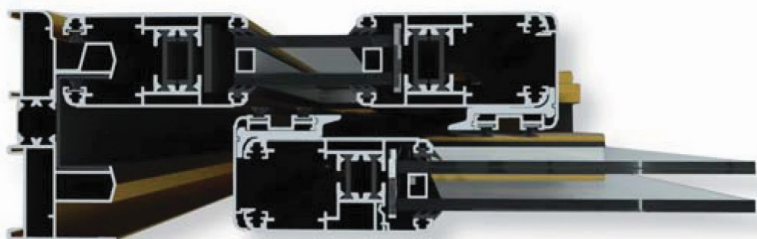
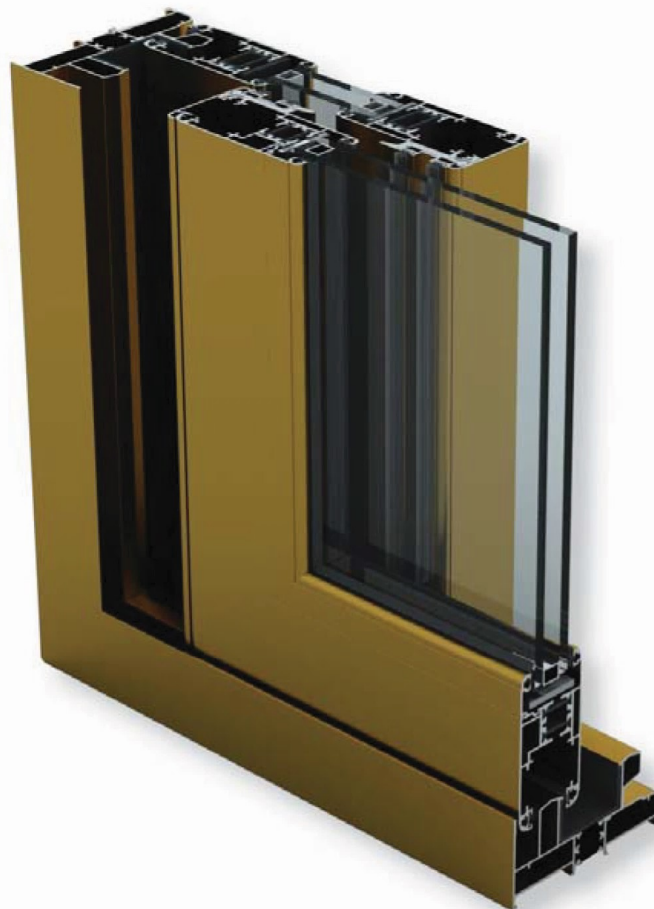
- Suitable for expansion in small and medium enterprises.
- Up to a maximum weight of 75 kg. It can move up.
- Air, noise and heat is minimal with wicks used impermeability.
- Provides appropriate solutions for all drive types.
- YWD 37, YWD provides partners with the ability to use 45 series.
- 28 mm. wingspan, cornices up to 70 mm. safe alternative.
- 19 mm. glass thickness can be applied up to.





## S 38 Thermo

- Suitable systems for medium and large openings
- Alternative sliding door window types ideal solutions
- High heat and sound insulation with high quality hair Wicks
- Wing weight of 102 kg/kad
- 38 mm.kanat width (including glass slats and Citas)
- 15, 18, 25 mm polyamide bridge
- 22 mm possibility of glazing up to thickness









[www.htudgroup.ca](http://www.htudgroup.ca)